

Get Involved

Here are all the ways to get involved

Ways to Join the Network

1

If you are living in a rural community, complete this **form** to Express Interest. For more details, proceed to the 'On-boarding Journey' below

2

Register to join our Rural Mental Health Network community

3

Subscribe to our Rural Mental Health Newsletter

On-boarding Journey

Our infographic outlines the easy steps to get your community involved



STEP 1

Learn More!

STEP 2

Get Connected

STEP 3

Begin On-boarding

STEP 4

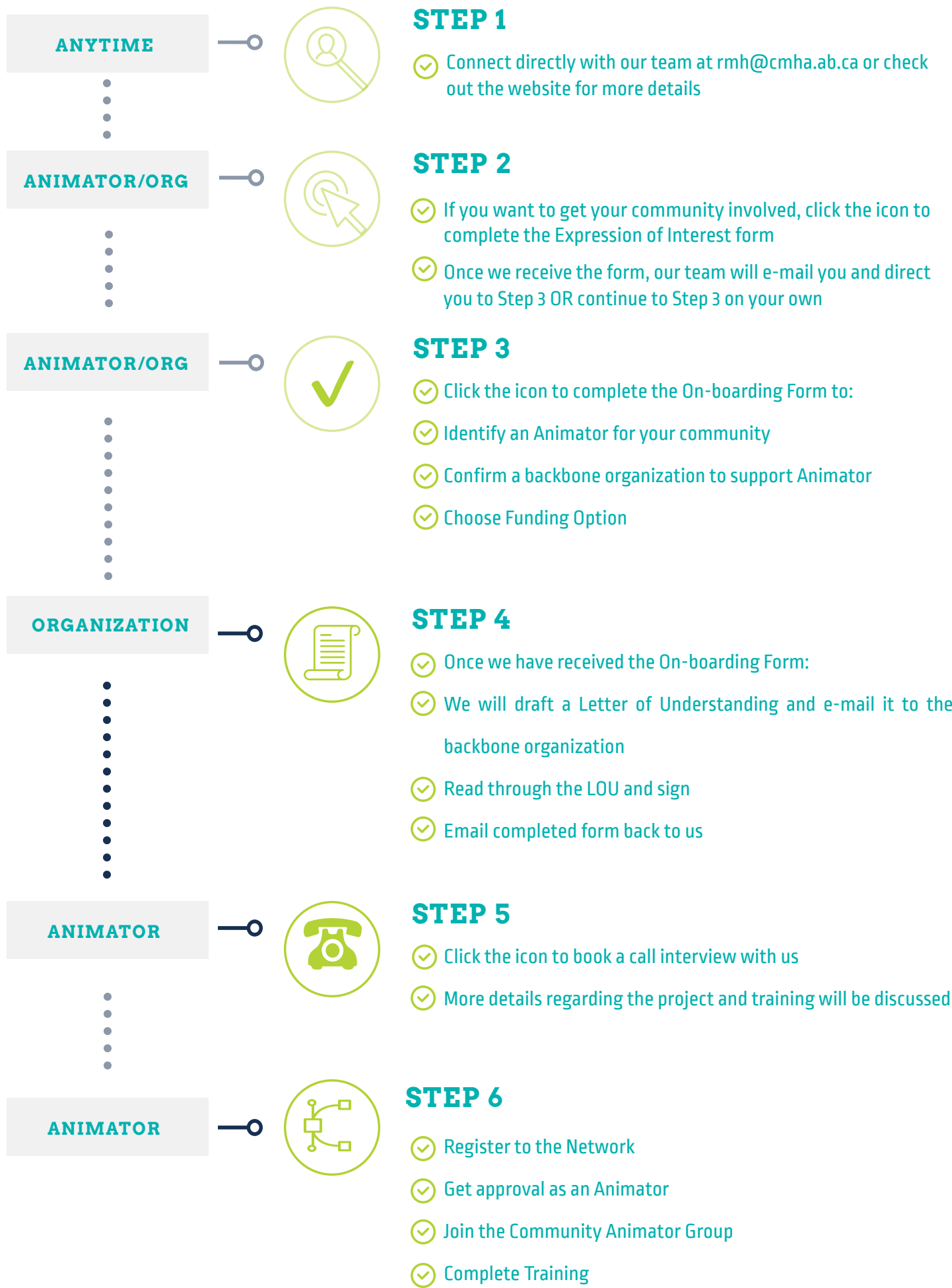
Sign a Letter of Understanding

STEP 5

Book a call Interview

STEP 6

Join the Network



Still need more information?



All the information you need is right at your fingertips!

On the main homepage you will find 5 boxes. Click each box to find more detailed information on each step of the on-boarding process and the roles of Animators and Organizations.

Contact us!

At any stage, please feel free to get in touch
rmh@cmha.ab.ca